

SUPERWHEEL gravity conveyor sections and stands

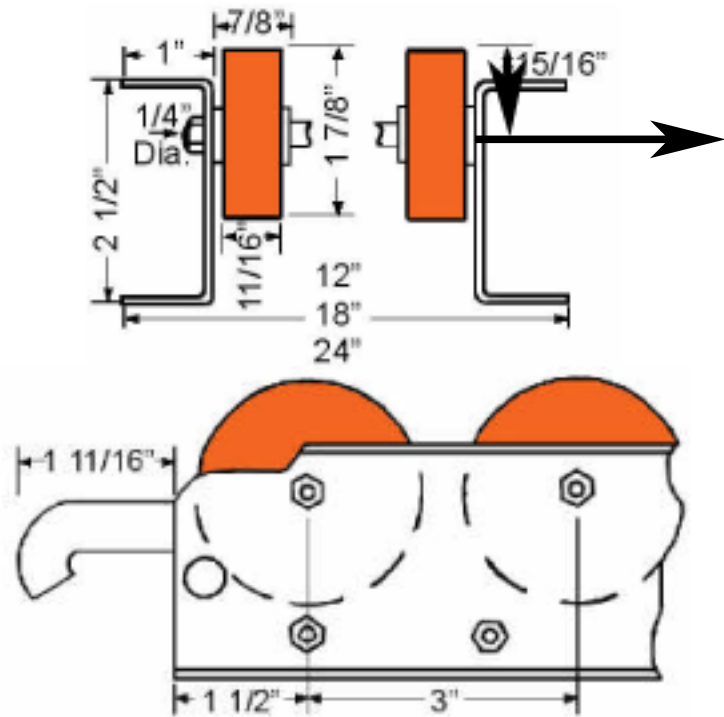
SUPERSECTION FEATURES

- Completely bolted construction.
- Formed 10 gage aluminum channel.
- Accurately aligned 1/4" diameter steel axles.
- Aluminum spacers.
- Stringers and cross braces of 10 gage aluminum.
- Self-locking nuts assure positive assembly.

CAPACITIES

- Individual Superwheel - 25# per wheel.
- Aluminum Frame Supersection (distributed load, supports on 10' centers) - 500#.

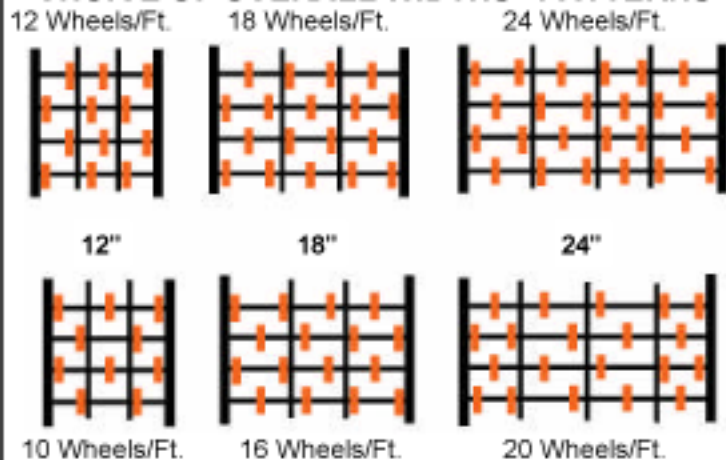
DIMENSIONS OF STANDARD SUPERSECTIONS



MODEL NUMBER CODES

Supersection Conveyor			Permanent Stand		
18	AS	18	PK	18	40 60
Width - inches	Frame: A Aluminum S Superwheels	Number of Superwheels per foot	Permanent Stand	Conveyor Width - inches	Height adjustment Range - inches e.g., 40" - 66"

CHOICE OF OVERALL WIDTHS - PATTERNS



PERMANENT STAND FOR SUPERSECTION

12" Conveyor
Model No.
 PK12-1519
 PK12-1825
 PK12-2433
 PK12-3040
 PK12-4066
 PK12-5680

18" Conveyor
Model No.
 PK18-1519
 PK18-1825
 PK18-2433
 PK18-3040
 PK18-4066
 PK18-5680

24" Conveyor
Model No.
 PK24-1519
 PK24-1825
 PK24-2433
 PK24-3040
 PK24-4066
 PK24-5680

Bolts to conveyor section.
Adjusts vertically and angularly.
Available for 12", 18" and 24" conveyor widths.

