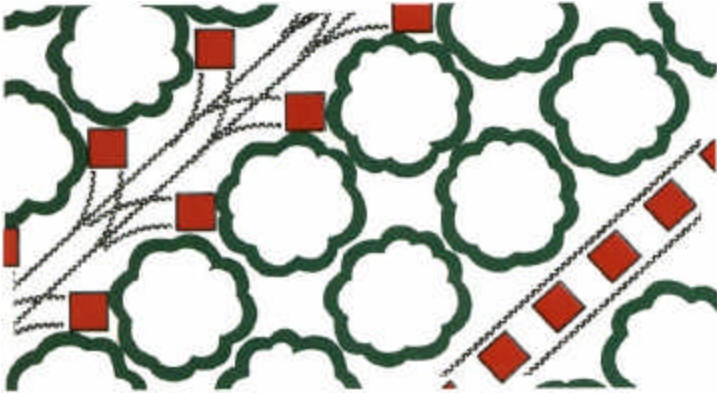


# Moving crops from field to truck in half the time at half the cost.



## Linear Handling Protects the Orchard

The top row of this diagram illustrates a typical forklift driving pattern as it travels in and out to deposit bins between trees. Soil is heavily compacted. Irrigation furrows are destroyed. Tree damage is obvious and picker productivity is reduced. The bottom diagram shows the single track made by the Straddle Fork. Straddling bins centered in a single row eliminates the problem caused by forklifts.

## Less Energy and Maintenance Expense

The Straddle Fork engine is capable of continuous, demanding operation. The normal, average fuel consumption is less than one gallon per hour on which it can match the output of 45 pickers. Grower and operator owners say Straddle Fork has less breakdown, less maintenance, and is less expensive to operate than any other machine.

Replacement parts are stocked at the Hamilton, Ohio plant and at the Camarillo, California service center. Many of the standard components are also available in tractor, forklift and truck service centers throughout the U.S.

## Exceptional Mobility

Four-wheel, posi-traction drive with rear-wheel steering allows the Straddle fork to handle crops in a wide range of conditions. It maneuvers extremely well on soft soil, sand, rough terrain, steep grades and rocky mountainsides with curving, narrow rows. Wide, high-floatation tires keep soil compaction to a minimum, even with payloads of up to 4500 lbs.



## Important Features

### Versatile

With unmatched ability to pick-up, stack and unstack bins, the Straddle Fork can be used as a standard forklift. Its open-ended front allows the entire mast section to be extended so that the forks are positioned just beyond the front wheels for loading of flatbed trucks. Controls for lifting, tilting and side shifting let it do everything a standard forklift can do.

### Controls

The hydrostatic drive system allows the driver to control forward, reverse and braking with one simple foot operated rocker pedal. The machine stops immediately when the pedal is released. Straddle Fork also features four-wheel drive or front or rear two-wheel drive. Full power steering is standard, and rear wheel control provides short turn radius.

### Towable

Optional quick-connect tow bar with its own master cylinder, recoil springs and shock absorbers means the Straddle Fork can be towed when this is preferred to driving.

### Parts Availability

Standard, off-the-shelf components are used in construction of Straddle Fork. They are easily available in almost every town where facilities for servicing of tractors, forklifts and trucks are located.

## Straddle Fork owners say...

"The biggest advantage of the Straddle Fork is being able to traverse over partially filled or empty bins in the field without disturbing them or damaging trees. Most of our growers, after they saw the Straddle Fork working, wanted us to use it instead of the other equipment. We were one of the first to use the Straddle Fork and we're going to continue with it. We don't see anything better."

Wes Grunden, General Manager, Fresh Fruit Division  
Ventura coastal Corporation, Ventura, CA.

"For moving bins from tree to roadside the Straddle Fork is the best overall method we know of. We also use field forklifts and 'cherry pickers,' but we prefer the Straddle Fork method over anything else. There is no question, in my opinion, that the Straddle Fork is as fast and efficient as they claim it is."

Paul Leavens, Owner-Partner  
Leavens Ranches, Ventura, CA