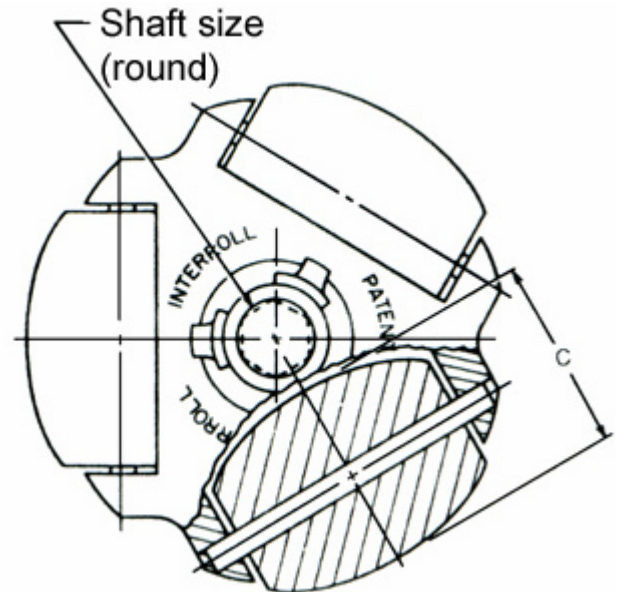
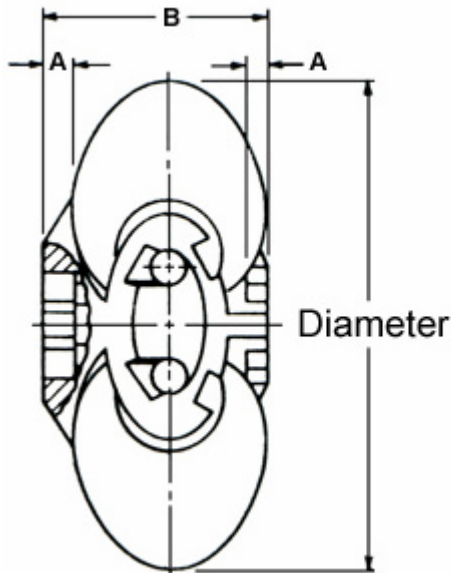


# Plastic Omniwheel



## Interroll



RW9

Diameters: 1.90", **48.2mm** O.D. - 0.325", **8mm** I.D Round  
 A: Overlap: 0.12", **3mm**  
 B: Width: 0.85", **21.6mm**  
 C: Diameter: 0.69", **17.5mm**  
 Recommended max load = 25 lbs, **11.36kg** per set Model 2.570



RW29



RW10

Diameters: 3.15", **80mm** O.D. - 0.5", **12.7mm** I.D Round  
 A: Overlap: 0.16", **4mm**  
 B: Width: 1.34", **34mm**  
 C: Diameter: 1.18", **30mm**  
 Recommended max load = 75 lbs, **34.02kg** per set Model 2.580



RW30

## Mounting

Mounting of Omniwheel units is both simple and direct. They may be fitted with axles or spacer bushings and installed in "U" shaped steel or aluminum channels. Alternately, they may be mounted on shafts and installed on conveyors in place of wheels or rollers, providing a convenient transfer station without the expense of designing and building transfer tables.

## Application

Omniwheels are corrosion resistant and well suited for applications where dirt, dust and moisture may be present. They require no lubrication or field maintenance.

## Ordering Note:

Two Omniwheels must be used together to provide support over 360° of rotation. Please order accordingly.